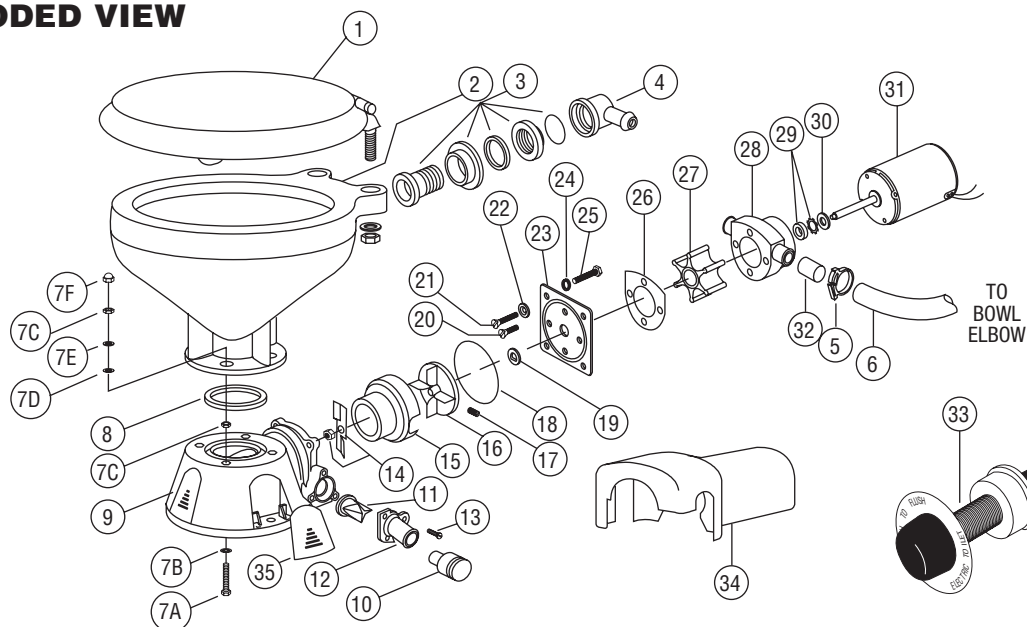


EXPLODED VIEW



PARTS LIST

Key	Description	Qty.	Part Number	Key	Description	Qty.	Part Number
1	Seat, Lid and Hinge Set	1		30	Slinger †	1	6342-0000
	Compact Toilet		29097-1000	31	Motors:		
	Regular Toilet		29127-1000		Motor - 12 Volt EMC †	1	37064-0000
1A	Hinge Set (1 Pair)	1			Motor - 24 Volt EMC†	1	37065-0000
	Compact Toilet		29098-1000	32	Adaptor	2	93003-0240
	Regular Toilet		29098-2000	33	Switch & Plate	1	37020-0000
2	Bowl, Compact Size	1	29096-0000	34	Motor Cover †	1	43990-0051
	Bowl, Regular Size	1	29126-0000	35	Screw Cover (3 each)	1	37003-1000
3 & 4	Bowl Spud & Intake	1	29048-0000		Service Kit		37040-0000
	Elbow & O-ring				Motor/Pump Assy. 12V EMC †		37041-0010
5	Clamp	1	18753-0044		Motor/Pump Assy. 24V EMC †		37041-0011
6	Hose	1	29035-1001				
7	Bowl Installation Hardware	1	18753-0637	*	Parts Supplied with Service Kit 37040-0000.		
7A	Phillips Head Screw**	4		**	Parts included with base 37004-1000.		
7B	Washer, Starlock**	4		‡	Wearplate #23 includes Sealing Sleeve #19 and Pump/		
7C	Hex Nut** (two places)	4			Base O-ring #18.		
7D	Washer, Plastic**	4		†	Parts included in Motor-Pump Assembly.		
7E	Washer Stainless steel**	8					
7F	Nut Cap**	4					
8	O-Ring Bowl/Seal	1	44101-1000				
9	Base Assembly**	1	37004-1000				
10	1-1/2" Adaptor, Discharge Port	1	98023-0080				
11	Joker Valve* **	1	44106-1000				
12	1" Discharge Port**	1	44107-1000				
13	Screw**	3	96050-0568				
14	Chopper Plate† with Lock Nut	1	37056-1000				
15	Macerator Housing †	1	37014-0000				
16	Centrifugal Impeller †	1	37006-0000				
17	Set Screw †	1	18753-0492				
18	O-ring*†	1	43990-0066				
19	Sealing Sleeve †	1	37036-1000				
20	Screw †	2	91009-0096				
21	Screw †	2	91010-0130				
22	Washer, Fiber*†	2	35445-0000				
23	Wearplate Kit ‡†	1	37018-0000				
24	Lock Washer #10, Stainless Kit †	4					
25	Screw †	4	91027-0011				
26	Gasket*†	1	12558-0000				
27	Flexible Impeller*†	1	6303-0003				
28	Body †	1	12554-0000				
29	Seal & Retainer*†	1	1040-0000				